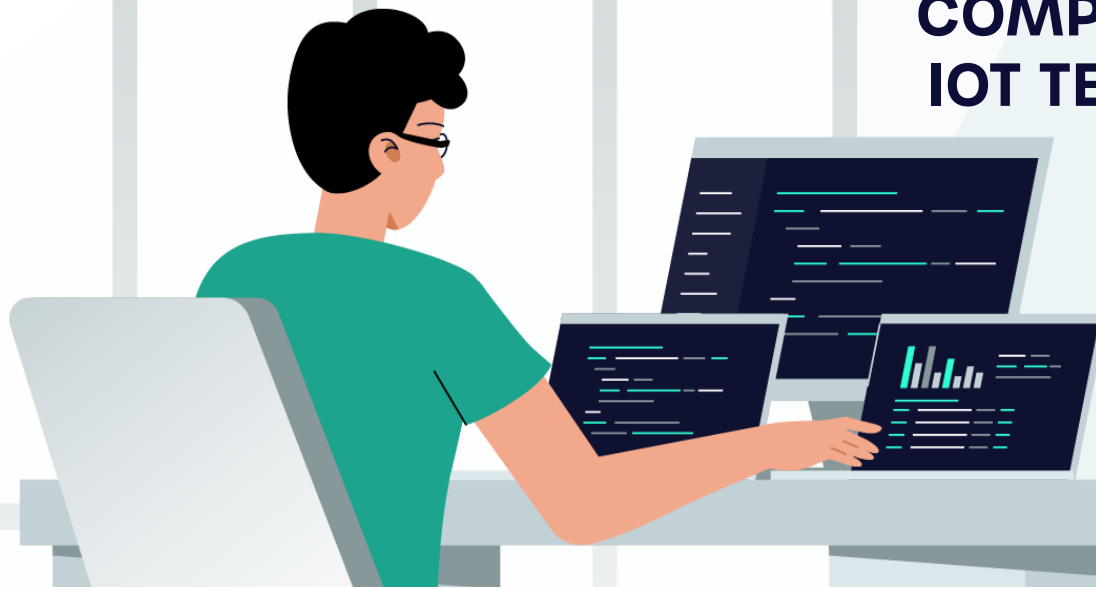


COMPREHENSIVE IOT TECHNOLOGY PLATFORM



Build with KoreLock® Inside.

KoreLock offers a patented IoT technology platform that includes firmware and PCBAs, mobile apps, cloud infrastructure for remote monitoring and control, and seamless cloud-to-cloud APIs integration with third-party access control applications.



WI-FI CLOUD ACCESS

Our patented, power-saving Wi-Fi technology provides enhanced intelligence for access control that extends battery life while operating on existing Wi-Fi networks.



LOCK FIRMWARE

Deep access control feature set including access users, guest users, schedules, auto-lock and passage modes and other lock settings.



BLUETOOTH LOCAL ACCESS

Secure Bluetooth® functionality, including lock/unlock, user management, settings, history and mobile credentials.



MOBILE APPS

Use our smart offline credentials including mobile credential and algorithmic PINs in non-connected environments.



CREDENTIAL FLEXIBILITY

Support for multiple types including pin codes, temporary guest codes, algorithmic codes, cards and mobile credentials.



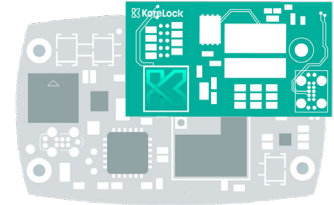
SECURE ENCRYPTION

Industry-standard security technologies, including SSL/TLS, 2048-bit public/private key encryption, and secure registration flows.

KORELOCK MODULE FUNCTIONAL SPECIFICATIONS

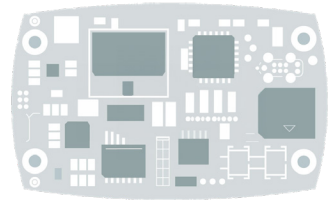
Best-in-class, tested, and proven with over 75,000 installations worldwide.

Users (PINs & Cards)	Up to 3,300
Audits	Up to 4,900 events stored on lock if offline.
Supported Credentials	User PIN, Temporary Guest PIN, Temporary Algorithmic PIN, and Mobile Credentials. Support for card credentials available (host hardware card reader required).
Passage Modes	Passage Mode and Auto-Lock Mode
Schedules	<ul style="list-style-type: none"> Lock Schedule (lock/unlock weekly schedule) Up to 63 Access Schedules (M-F, 9-5) Up to 63 Access Exception/Holiday schedules Passage Mode Schedules (alter between passage and auto-lock)
Programming	Via keypad, over BLE or Wi-Fi.
Lockout	Defaulted to 5 incorrect entries, field configurable
Hardware	Nordic Semiconductor nRF52840, Espressif Systems ESP32-S2-MINI-1
Communication Standards	<ul style="list-style-type: none"> 2.4 GHz WiFi (IEEE 802.11 b/g/n) WPA, WPA2 HTTPS encrypted with TLS UDP channel with AES-128 encryption Bluetooth® low energy (version 4.2)
WiFi Connection Interval	Intermittent WiFi connectivity defaults to every hour and when keypad pressed. Connection interval can be adjusted between every 5 minutes to 1x per day. Always on connection possible with optional external power supply.
OTA (Over the Air Firmware Updates)	Available for WiFi and BLE modules via BLE (delivered by mobile app) and over Wi-Fi.
Security	Mutually-authenticated TLS 1.2 with 2048-bit keys.



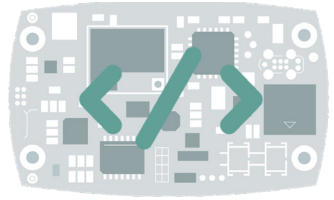
KORELOCK MODULE

Embedded Smart Lock on a chip with full-featured firmware, Wi-Fi for cloud connectivity and BLE for local control.



CUSTOM PCBAS

Work with KoreLock to embed supported processor, Wi-Fi and BLE modules onto custom PCBA to fit specific hardware.



FIRMWARE LICENSE

Build your own PCBAs with supported hardware and license KoreLock firmware and app support.

