

## Introducing turnkey IoT Smart Lock technology to enable wireless locking devices.

KoreLock provides all the technology lock manufacturers need to convert their existing offline locks into connected Smart Locks. We serve a vast market of lock manufacturers, lock brands, specialty lock makers, and software companies whose end-use customers all demand connected products that are difficult for the lock makers to develop. KoreLock provides a turnkey offering with embedded firmware, ready-made or custom PCBAs, mobile and web apps, and cloud infrastructure, that is the solution to their needs. Benefits include:

- Speed to market and lower go-to-market costs,
- Confidence that new Smart Lock products will make it to market, and
- Cutting-edge Smart Lock solutions with minimal R&D costs.

**KoreLock's patented IoT technology platform is not just at the forefront of innovation in the Smart Lock industry, but is also committed to pushing the boundaries of what's possible in the marketplace.**

## OUR SOLUTIONS

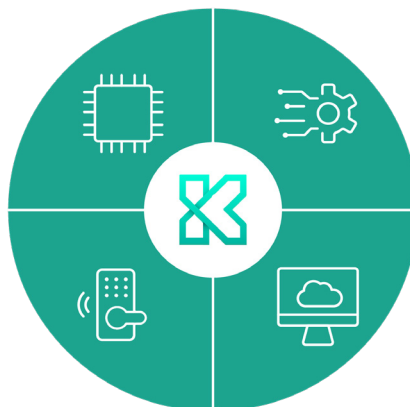
KoreLock's broad and deep capabilities portfolio is centered on four key offerings.

### EMBEDDED TECHNOLOGY

All the firmware & PCBAs needed to build a Smart Lock "out of the box," with a full access control feature set, Wi-Fi and Bluetooth® connectivity.

### OEM HARDWARE

Market-ready Smart Lock products that can be white labeled by our customers.



## TRUSTED WORLDWIDE

- ✓ Over a decade of experience in enabling IoT Smart Locks.
- ✓ Best-in-class technology embedded in 75,000+ devices in over 65 countries.
- ✓ Scalable, patented Smart Lock platform that positions our partners to offer cutting-edge solutions.
- ✓ Patented technology and continuous innovation to stay ahead in the intelligent access control market.

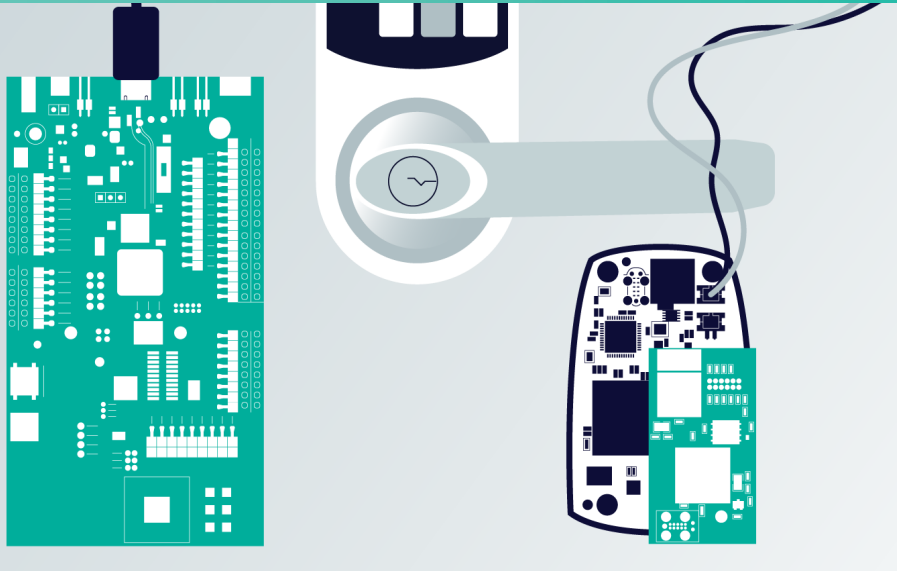


### ENABLEMENT SERVICES

End-to-end development of Smart Locks from factory sourcing to mobile apps.

### CLOUD SOFTWARE

Intuitive mobile and web apps for local and remote Smart Lock access control.



## The KoreLock® Module

KoreLock's patented technology platform is delivered via firmware and a unique printed circuit board assembly (PCBA) designed to cater to the specific needs of lock manufacturers. The KoreLock module, a "plug-and-play Smart Lock on a chip," comes with full-featured firmware, Wi-Fi for cloud connectivity, and Bluetooth® for local control. Our innovative platform can be seamlessly installed into any locking device, including door locks, edge controllers, readers, keypads, electric strikes, maglocks, and more, without no new wiring, ensuring a hassle-free installation process.

## Company Outlook

Like most good ideas, KoreLock started with a few experienced business executives who saw a market need and took action. Today, the company offers a skilled development and operations team with a clear technology roadmap to support our partners and customers.

**Discover why KoreLock is rapidly becoming the go-to Smart Lock technology hardware and services platform for access control and smart locking devices worldwide.**

## CONTACT US

### KoreLock, Inc.

7100 E. Bellevue Avenue, Suite 203, Greenwood Village, CO 80111  
303.681.5785 • info@korelock.com

## MARKET PARTNERS



## LEADERSHIP TEAM

### Grant Walter

#### Chairman, CEO and President

- Dynamic executive leader
- VC and PE backed experience
- Track record of results
- MBA, Tuck at Dartmouth & BSEE, Northwestern University

### Rob Goff

#### Co-founder and VP Product

- Extensive domain expertise
- Visionary product leader & successful product developer
- Inspiring team builder
- BBA, University of Puget Sound